

CANCER

CANCER

CANCER = 2 DISEASES - TUMOR GROWTH

- MALIGNANCY

TUMOR + FASCIOLPSIS BUSKI (LARVAL STAGE) + ISOPROPYL ALCOHOL =
ORTHO-PHOSPHO-TYROSINE

+

GHC: PROTECTS THE TUMOR FROM THE IMMUNE SYSTEM (ONLY IF IT LACKS
ORGANIC GERMANIUM AND THERE IS ISOPROPYL ALCOHOL)

ISOPROPYL ALCOHOL:

- 💧 PRESENT IN HYGIENE PRODUCTS AND FOOD
- 💧 PRODUCED BY BACTERIA

Continued

COMMON FACTORS

- ◆ All cancers start in an organ
- ◆ All tumors end up being malignant
- ◆ common to all malignant tumors:
 - The human intestinal parasite called: **FASCILOPSIS BUSKI**
 - And the presence of isopropyl alcohol (produced by bacteria Clostridium) and also present in many products.

ADULT – EVOLUTIONARY STATES OF FASCIOLOPSIS BUSKI LARVAE



Egg



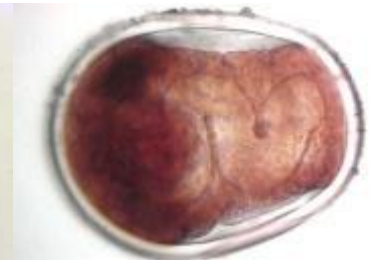
Miracidia



Redia



Cercaria



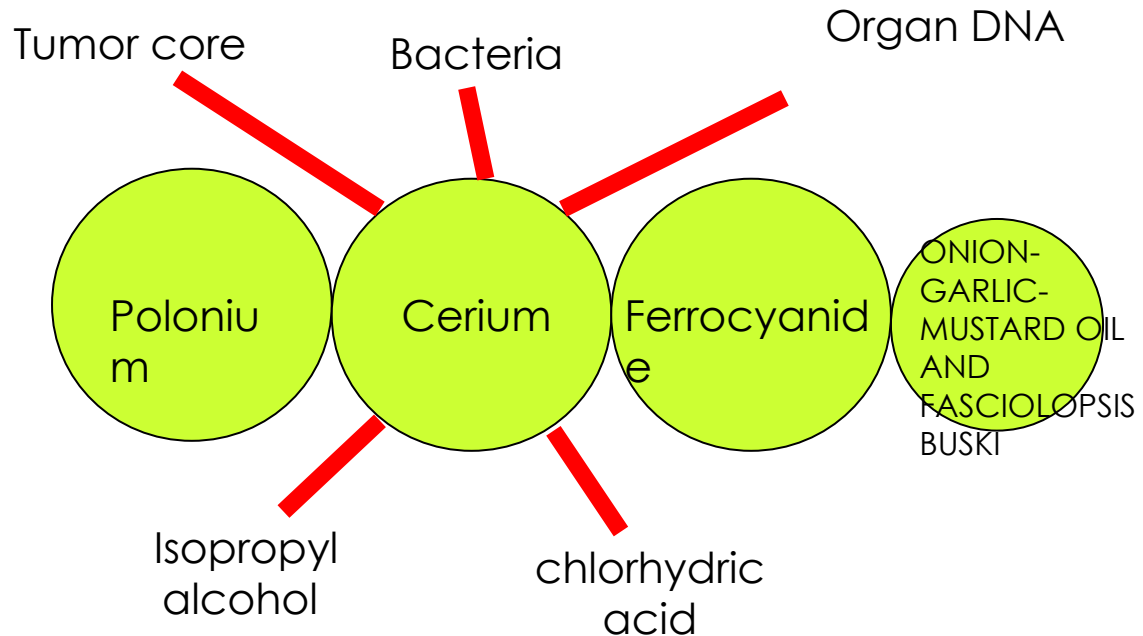
Metacercaria

Cancer is not caused by the adult parasite but rather it's intermediate states.



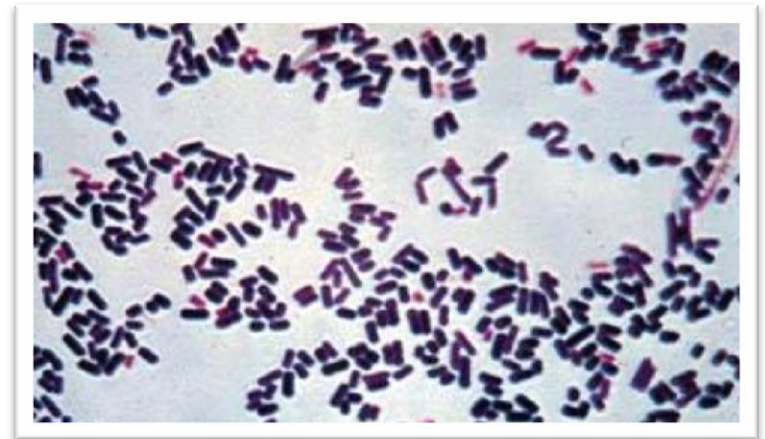
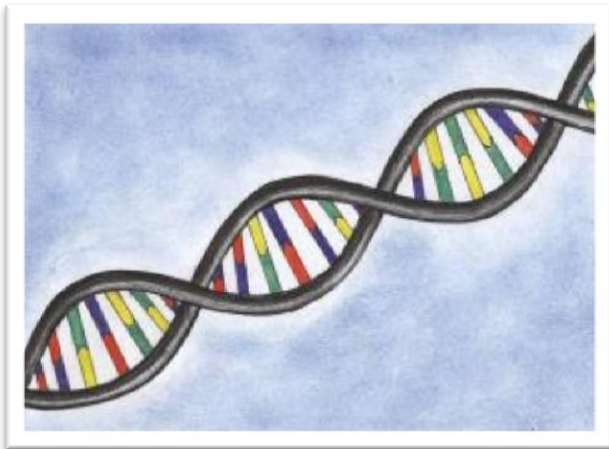
BEGINING OF CANCER

- ◆ The real carcinogenic, the cause of all cancers, is formed initially by 4 parts. The critical element is the ferrocyanide, found basically in drinking water treated with choline.



BACTERIA CLOSTRIDIUM

- ◆ Lives in our tumors, intestines and endodontics, where there is rotten meat and/or lack of oxygen (it is anaerobic). This bacteria produces isopropyl alcohol.



**And also produces DNA
similar to our DNA**

TUMOR GROWTH

- ◆ Cancer activity is determined by the presence or not of OPT.
- ◆ **OPT** (orthophosphotyrosine) – is a powerful tumor growth stimulant – it is produced in the presence of fasciolopsis buskii parasite, polonium, cerium and fasciolopsis buskii DNA
- ◆ **DNA** (deoxyribonucleic acid) – helps tumor growth – it is produced by the bacteria clostridium
- ◆ **HCG** (Human Chorionic Gonadotrophin) – is a hormone that protects the tumor. It is the same hormone that protects human foetus from the attack of the immune system of the mother. It is produced by the hypothalamus with the presence of the “cercaria” stage of the Fasciolopsis Buskii, together with isopropyl alcohol and bacteria clostridium.

THE BEGINNING OF ALL TUMORS HAPPEN IN:

THE HYPOTHALAMUS

And consecutively there is a second organ involved: THE
PITUITARY

- ◆ **PITUITARY GLAND:** Makes a dozen of our more powerful hormones, controlling our sexual glands, thyroid and adrenal.
- ◆ Is controlled by the hypothalamus that tells the pituitary when to segregate a particular hormone.

HORMONES

THE PITUITARY GLAND regulates itself. Meaning that it stops producing when there is enough hormones in circulation.

In a small corner of the hypothalamus and in the pituitary gland mini explosions happen

- Some cells of the hypothalamus and in the pituitary gland are landing in the blood, the lymph nodes and in the saliva.
- Floating together with the red blood cells, white blood cells and platelets.

In a small corner of the hypothalamus and in the pituitary gland mini explosions happen

- ◆ Hypothalamus cells in the body are unable to receive messages from the brain. Those continue to produce “releasing factors” without control
- ◆ The pituitary gland cells, that are linked to the hypothalamus cells by fusion, also receive those “releasing factors”, therefore are forced to produce and take out HGH continuously.

C3 COMPLEMENT

- ✓ A part of our immune system is called complement.
- ✓ There are different types of complements.
- ✓ C3 is the biggest protein of the system.
- ✓ The job of the C3 complement is to eliminate renegade cells from the hypothalamus and the pituitary.

RESULT

- 😊 The C3 complement catches cells that run loose and penetrate them by piercing them.
- 😊 The white blood cells can now eat them.
- 😊 Wave after wave of those loose cells arrive.
- 😐 It is now difficult for the C3 complement to keep its work of catching them.
- 😐 Once these molecules have done their jobs, they can't be reused.
- 😐 At this point they get eaten by the white blood cells just like the damaged cells.
- 😐 The body must then make more C3.
- 😐 Soon the body can't keep the great demand for C3 complement.

STEP 1 IN THE FORMATION OF A CANCER

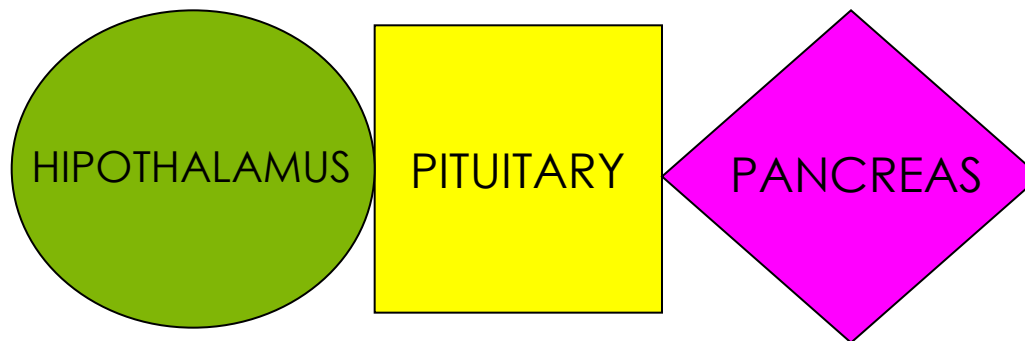
- Small duplex are formed, with cells from the hypothalamus and the pituitary.

THEY FUSE!

STEP 2 IN CANCER FORMATION

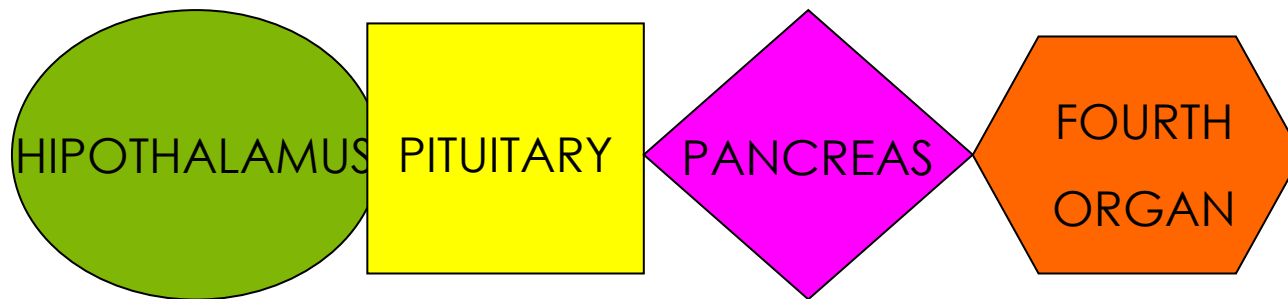
- ◆ Another micro explosion starts in the pancreas.
- ◆ Pancreas cells start to float freely on the body fluids.
- ◆ The duplex that formed earlier, now fuse and stick to the new pancreas cells forming triplets.
- ◆ Loose cells from those three organs, its duplex and triplets, full the body fluids.

THE TRIPLET ...



... ARE FOUND IN THIS ORDER IN A CANCER

THEN THIS TRIPLET IS ATTACHED TO A FOURTH ORGAN:



A FOURTH ORGAN....

- ◆ The fourth organ makes sticky substances together with small strands called fibronectin, laminin and cadherin E, forming a kind of net.
- ◆ The triplet sticks to the fourth organ and fuse together, a quartet has been formed.
- ◆ This fourth organ will form the “primary tumor”.
- ◆ The triplet only sticks to the a fourth organ when there are fibronectin and laminin strands and cadherin E in excess.

WHY IS SO MUCH STICKY SUBSTANCE FORMED?

- ◆ The excess of laminin, fibronectin and cadherin is only produced when the Fasciola and Ascaris parasites live around.
- ◆ The triplet gets trapped in it like a fly in a spider web and fuse to the fourth organ cells.
- ◆ The triplet provides the tumor growth initial point, that is, the tumor core.

WHAT HAPPENS TO THE HYPOTHALAMUS WHEN THE TUMORAL PROCESS BEGINS?

- ◆ A chemical substance accumulates in the hypothalamus gland when it is losing its cells and releasing them free in circulation.
- ◆ It is called chlorogenic acid
- ◆ It is a vegetable compound considered to be an antigen or an allergen by the “ecological allergies” experts.

FOOD THAT CONTAIN CHLOROGENIC ACID

- ◆ Chia seeds.
- ◆ Potatoes, except sweet potato.
- ◆ Cow's milk and other dairy products except goat milk.
- ◆ Chilies of all kinds except jalapeño seeds
- ◆ Green fruits of many kinds
- ◆ Coffee and regular tea
- ◆ Potatoes: cooking destroys chlorogenic acid but frying does not.

WHAT HAPPENS TO THE HYPOTHALAMUS WHEN THE TUMOR PROCESS STARTS?

- ◆ A Chemical substance accumulates in the pituitary gland when losing its cells and releasing them free in the circulation.
- ◆ It is called Phloridzin
- ◆ It is also known as a phenolic substance belonging to the list of antigen or allerge food.

FOOD WITH PHLORIDZIN

- ◆ Apples, except for Red Delicious and Golden Delicious, both very ripe.
- ◆ Pork, ham and products
- ◆ Soya products including oil
- ◆ Ripe fruit of many kinds
- ◆ Banana with any shade of green on the tips.
- ◆ Cauliflower (green)
- ◆ Nuts, Dark green pumpkin (unripe)
- ◆ Amaranth and millet (raw)

WHAT HAPPENS TO THE HYPOTHALAMUS WHEN THE TUMOR PROCESS STARTS?

- ◆ Again a chemical substance is responsible for the micro explosions in the pancreas.
- ◆ It is Gallic acid...
- ◆ Another phenolic substance that comes from food.

FOOD WITH GALLIC ACID

- ◆ All kinds of grains treated with preservatives.
- ◆ All kinds of oils treated to prevent rancidity.
- ◆ Enriched and bleached flour (BHA/BHT)
- ◆ Chicken fed with feedstock and its eggs.
- ◆ Cow's milk and products.
- ◆ Most maple syrups

STEP 1

- ◆ **STOP EATING FOOD WITH CHLOROGENIC ACID.** After avoiding all food with chlorogenic acid for 5 days no hypathalamus cells can be found in the body.

STEP 2

- ◆ **STOP EATING FOOD WITH PHLORIDZIN.** After avoidind all food with phloridzin for 5 days no fragment or cell from the pituitary glan can be found in the blood or lymphatic areas.

STEP 3

- ◆ **STOP THE INGESTION OF FOOD WITH GALLIC ACID OR PROPYL GALLATE.**
No duplex nor triplets can be found

THE IMPORT FOR OUR HEALTH IS HOW LONG THE SUBSTANCE STAYS IN THE INVOLVED ORGAN WHICH DEPENDS ON PARASITISM

PARASITES IN THE HYPOTHALAMUS

- When chlorogenic acid is present in the hypothalamus Strongyloides stercalis can be found



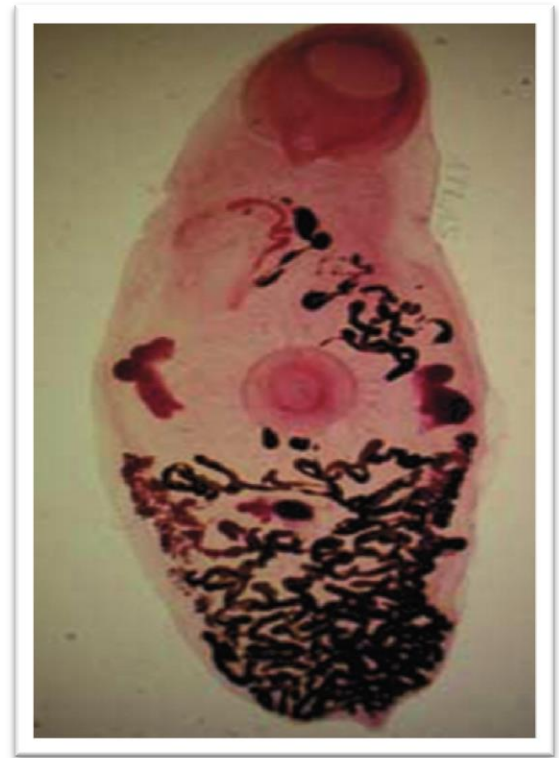
PARASITES IN THE PITUITARY GLAND

- When phloridzin is present in the pituitary gland Clonorchis sinensis parasites can be found



PARASITES IN THE PANCREAS

- When gallic acid is found in the pancreas the Eurytrema pancreaticum parasite can be found



3 PARASITES

3 ALLERGENS

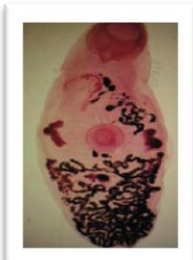
3 ORGANS



Strongyloide



Clonorchis



Eurytrema

Food with

Chlorogenic acid

Hypothalamus

Phloridzin

Pituitary gland

Gallic acid

Pancreas

REMOVE FOOD THAT HAVE THESE ALLERGENS AND THE PARASITES RESPONSIBLE

PROSTAGLANDIN E2 (PGE2)

- ◆ Our organs produce prostaglandin E2 (PGE2) when we ingest food to which we are allergic.
- ◆ These are not made immediately, only later, when a south polarity force get to this organ together with nickel and radioactivity.

THE ALLERGIES MAKE US PRODUCE PGE2

- ◆ The change in the amino-acid structure, from “l” to “d” alerts the tissue for the allergy fighting mechanism to appear (this change can be supported by the presence of varied bacteria in this tissue).
- ◆ This stimulates the creation of more PGE2 since the body considers it allergens as well.

This allergy explosion fills us with PGE2 inflammations.

The inflammations open the doors of our cells to bacteria and virus.

HOW TO SHRINK A TUMOR



STOP:

- ◆ The destruction of the immune system caused basically by chlorine.
- ◆ The parasitism
- ◆ The PGE2 allergic process
- ◆ The invasion of bacteria and oncovirus
- ◆ The toxic effects of dyes, metals and radiation and active elimination from the body in its chronic disease.

PRINCIPLE:

WE CAN'T ELIMINATE FROM OUR BODY
WHAT WE KEEP PROVIDING IT WITH.

IT IS VITAL TO FIND THE SOURCES OF
IMMUNESUPPRESSANTS AND ELIMINATE THEM.

SOURCES OF IMMUNOSUPPRESSANTS

WATER

MOUTH

FOOD

**PRODUCTS FOR
THE HOUSE AND
THE BODY**

IN THE TUMOR:

- ◆ There are no enzymes nor ARN to make them (insntuctions for making protein)
- ◆ Lack amino acid (raw maerial for making protein).
- ◆ Mitochondria do not work (they are the energy generators of the cell).
- ◆ There is no ATP (cell fuel) because mitochondria do not work).
In other words:
 - There are no instructions (enzymes)
 - There are no materials (amino acids)
 - There is no fuel (ATP)

Continued...

CELLULAR MITOCHONDRIA DO NOT WORK BECAUSE:

- ◆ Malonic acid Interference
- ◆ Lack of thyroid hormones (not because the body does not make them but because the THIOUREA in the tumor cells destroys them on entering the tumor cells).

THIOUREA: Regular substance that all cells produce to facilitate cell division (healing when the cells and tissue are damaged).

In the tumor cells there is excessive production in the urge to heal themselves.

Excessive production of thiourea therefore destruction of thyroxine needed for the working of mitochondria (and thus the production of energy):

- ◆ Urge of cells to heal
- ◆ Deficit of pyruvic aldehyde which is the brakes of cell division.

Continued...

- ◆ Regular cell (healthy) = 1 minute thiourea is produced followed by: 1 minute piruvic aldehyde.
- ◆ Tumor = The production of piruvic aldehyde stops for up to 15 minutes then is produced for only 1 minute. It is the AMINES fault.
- ◆ Amines:
 - Some are segregated by hte cells to improve cell division (survival) because there are bacteria.
 - Excessive quantity produced by some strains of bacteria (clostridium).

CLOSTRIDIUM

- ◆ Produces amines
- ◆ Produces isopropyl alcohol
- ◆ Produces DNA: The DNA of the bacteria combines with the DNA of the patient and the DNA of the virus that carry them producing:
 - Cell mutation in which ARN and normal protein are not produced since with the excessive cell division the cells expose their chromosomes to mutagen substances.
 - Production of oncogenes.

DEFENSE MECHANISM OF THE CELLS:

1. Call the immune system (failure of immune system in cancer)
2. Temperature rise (in cancer it does not rise)
3. Ask for oxidants (in cancer they disappear)
4. Ask for reducers (in cancer the reductive capacity disappears)
5. Ask for self-destruction (last resort).

CELL DEFENSE MECHANISM FAILURES

Temperature does not rise:

- 💧 Amines fault?
- 💧 Thyroid problems?

FAILURE IN THE DEFENSE MECHANISM OF THE CELLS:

- 💧 Oxidants disappear: To oxidize is “to burn” adding an oxygen atom or taking away an electron.
- 💧 To:
 - Facilitate toxic excretion
 - Turn food into energy.
- 💧 In cancer the main detoxifying enzymes disappear:
 - **Cytochrome P450:** needs iron. In cancer there is the lack of iron because:
 - Parasitism and excess of heavy metals.
 - Rhodizonic acid
 - Cytochrome C
 - Amine-oxidase
 - D-amine-oxidase

FAILURE IN THE DEFENSE MECHANISM OF THE CELLS

💧 **Reduces (vit.C, cysteine, glutathione) disappear:**

When oxidation fails, the body tries the opposite: reduction (oxygen atoms are taken out or electrons are added)

In cancer the blood has little reducer power because of the presence of heavy metals.

💧 **Apoptosis:**

Cell self-destruction cannot overcome the accelerated division generated by the bacteria attack. The cells divide rapidly to survive.

💧 **Immune system failure:**

- Intoxication of white blood cells (immunosuppressive toxics)
- White blood cells asphyxiated by ferritin
- White blood cells immobilized by lanthanides.

Continued

...

INTOXICATION OF WHITE BLOOD CELLS:

The tissues with accelerated mitosis attracts more heavy metals, dyes, radioactivity, lanthanides, etc.

Wherewith the white blood cells are virtually unfit by its intoxication.

Main toxics:

- ◆ **Avoid malonic acid** = the organism mistakes it with succinic acid and the Krebs cycle gets blocked and inhibits cellular respiration.

Otto Warberg in 1920 discovered that in tumors the respiration is almost inhibited.

The malonic acid cause tumors to grow and damages kidney function.

◆ **MALONICO ACID:**

- Produced by fasciolopsis buski, fasciola and tapeworm larvae.
- Dental pieces (plastic)
- Food

Food with malonic acid:

- ◆ Tomato
- ◆ Beans
- ◆ Alfalfa sprouts
- ◆ Apricot
- ◆ Brocoli
- ◆ Carrot
- ◆ Kombu seaweed
- ◆ Lime
- ◆ Mango
- ◆ Onion
- ◆ Papaya
- ◆ Khaki
- ◆ Tamari
- ◆ Turnip
- ◆ Orange

WHITE BLOOD CELLS INTOXICATION:

Malonic acid detoxification:

- ◆ Vit B12
- ◆ Folic acid
- ◆ Methyl groups (methionine, betaine)
- ◆ Sulphur (cysteine)
- ◆ Vit. C

MALONIC ACID:

- ◆ Causes strokes (infiltration of body fluids into places that do not correspond: lungs, abdomen, groin, legs)
- ◆ Elevates creatinine (bad kidney health)

HEAVY METALS

- ◆ All the sulphur is consumed to eliminate it from the body: in the form of cysteine, methionine, taurine, glutathione...
- ◆ They accumulate in tissue with accelerated mitosis.
- ◆ The metals (except lanthanides) combine with sulphur and form sulphide becoming soluble and are easily excreted through the kidneys and intestines.
- ◆ At older ages, less capacity of detoxifying
- ◆ Cooking with glass or ceramic pots, stainless steel releases chrome and nickel (very carcinogenic)
- ◆ Change to PVC pipes
- ◆ Use plastic glasses and watches
- ◆ Use non metallic jewelry
- ◆ Be careful with dental work

- ◆ **ISOPROPYL ALCOHOL:** the most common antiseptic in bottled, canned or packaged products. Avoid the syllable “prop” in hygiene and cosmetic products.
- ◆ **BENZENE:** fruit and vegetables, coffee, lubricants.
Detoxify with vit. B2
- ◆ **Asbestos:** buildings and food like fruits and vegetables, cereals, sugar (by the conveyor belts)

The WBC eat them, pierces and let out ferritin and iron, that end up covering the receivers wherewith do not recognize bacteria, virus nor toxics and cannot empty toxic load either. Even with the elimination the WBC stay with a lot of oxidized iron (ferric) that needs huge amounts of Vit. C to eliminate.

ASBESTOS AND ITS CONTRIBUTION TO CANCER

By ingesting it, the WBC's eat the asbestos needles and cover the tips with a protein so it sticks and doesn't escape. This protein is the ferritin. Its mission is to gather iron (oxidant) that it puts into its spherical structure. These balls break because of the shape of the asbestos needles which releases the iron and oxidizes the good germanium. Because there is no more free iron, ferritin is made and this keeps going on.

The oxidate germanium attacks the spleen and causes anemia. The loss of good germanium reduces our immunity and generates P53 mutations and excess of gonadotropin (tumor defender).

The good germanium is necessary to protect from tumors, but the germanium supplements contain inorganic germanium (germanium dioxide) **use hydrangea!**

Avoid asbestos in food present in fruit skin, sugar and products with sugar (because of conveyor belts).

To eliminate the ferritin cover from the white blood cells:

Take for the first 2 weeks:

- ◆ 6 papain + 6 bromelain +3 MSM +3 hydrangea + 1 fennel, one before breakfast, lunch and dinner.

After the second week:

- ◆ 6 papain + 6 bromelain + 1 MSM + 1 hydrangea + 1 fennel
- ◆ **Bromelain and papain:** eliminates ferritin from WBC's so it can clean the tissue from asbestos, dyes, bacteria,...
- ◆ **MSM:** turns ferric iron (bad) into ferrous iron (good)
- ◆ **Hydrangea:** source of organic germanium good to replace the oxidized one.
- ◆ **Fennel:** strengthen the action of all of the above

Good germanium :

- ◆ Generates interferon
- ◆ Stimulates T cells
- ◆ Protects the chromossomes from viral infections

The absence of good germanium casuses:

- ◆ mutations of the gene p53 (caused by AZO dyes, vanadium and F. Buski larvae)
- ◆ Mutantions and rupture of chromossomes (it is what you see in a cytology). The p53 is what slows down the mutated cell multiplication. If it is disabled, everything depends on the bcl-2 and the bax that regulate the apoptosis (cell self-destruction).

All tumors (good or malignant): there is over production of unregulated bcl-2 and bax proteins – cell apoptosis doesn't happen fast enough.

Warsts are first cousins of the tumors:

- ◆ They have many heavy metals
- ◆ They have mutagens produced by ascaris and F. buski larvae
- ◆ They have P53 mutations
- ◆ They have MYC oncogens
- ◆ But still they keep their self-destruction.

The bcl-2 gen works well for 30'' (produces bcl-2) followed by bax production for another 30'' (bax gene works well)

The ferritin layer asphyxiates the white blood cells

LANTHANIDES: make more damage than the heavy metals

- ◆ With them ADN production starts 13 seconds later but lasts longer.
- ◆ They fill the iron and calcium cells and they are not able to ask for self-destruction because there is no phosphatidylserine which is what leaves the cell to ask for its digestion. Usually the leaving of phosphatidylserine attracts pancreatin and lipase (digestive enzymes) found in all healthy tissue but not in tumors.
- ◆ Present in: dental fillings, fruits and vegetables, waters (including reverse osmosis) and supplements.

◆ Other cancer formers mutagenics:

- Beta propiolactone: associated with ascaris. Tumor shaper.
- Hydroxyurea: associated with ascaris. Kills WBC's.
- Cycloheximide: associated with F. buski. Larvae. Helps the virus.
- Acrolein and acrylic acid: overheated oils, plastic dentures and ascaris larvar above all. Generates over production of DNA.
- Azo dyes(carcinogenic) Sudan IV, sudan black B. in food, cloathes and hair dyes. LDH and alkaline phosphatase increase and prevent vit.A absorption that regulates tumor growth.

- ◆ **DAB:** soda, gelatin, sweets, milk
- ◆ **Fast green:** also in fruits and vegetables
- ◆ **Sudan black B, sudan IV, fast green:** dyes, dairy, tattoos

A single infinitesimal dose delivered to mice = cancer
Hard to detoxify – accumulates in fat.

To detox.: high doses of Q10, B2 and glutathione.

They are the responsables for the oxidants deficit and the high levels of alkaline phosphatase and LDH in the exams.

PAH's (POLYCYCLIC AROMATIC HYDROCARBON)

- ◆ Dangerous mutagenic. If rubbed or injected in a mouse in a few months tumors appear.
- ◆ Easily diluted in purines and pyrimidines of the DNA (present in excess in tumors)
- ◆ The cholesterol molecules have similar structures to the PAH's.
- ◆ Our own cholesterol becomes PAH's and part of our hormones (estrogen, testosterone,...) are made by cholesterol that can become PAH's

ONLY IN THE PRESENCE OF ASCARIS!

PAH's

- Some PAH's present in the tumors (malignant or not):
 - **20- Methilcholantrene:** 0,1mg put under the skin of a mouse causes death by cancer in a few months.

Produced by ascaris.

- **1-10 Phenanthroline:** The cancer patients are full of phenanthroline. Always coupled with ferroin (derived from iron), which is what is seen in a urine analysis (the phenanthroline is never seen). The cancerous tissue steals iron from the organism to detoxify the phenanthroline and this leads to iron deficit and the detoxifying stops.

Made by ascaris. Ten days after eliminating the ascaris larvae the phenanthroline is still on the same levels. It will only disappear after a week of intensive supplementation with ferrous gluconate.

- ◆ **Fhorbol:** from the metabolism of other parasites and ascaris.
- ◆ **Dibenzathracene:** from the metabolism of other parasites and ascaris.

Ascaris and other parasites also contribute to the tumor process bringing bacteria.

When there are no parasites nor bacteria the APH's and its mutations disappear.

There will be no excess of DNA for the mitosis either, nor the amines produced by the bacteria, consequently the piruvic aldehyde (the brakes) will be once more produced by the cells (slowing down the mitosis). Next step is the levels of thiourea lower allowing the thyroxine to take its place and cell function start to normalize.

FUNDAMENTAL:

Do not settle with the reduction or removal of the tumors:

- ◆ In practice we do not die from cancer but from the organ toxicity and pathogenics.

We have to eliminate both!

- ◆ The toxins extend to vital organs (spleen, bone marrow, liver, parathyroid).
- ◆ The mutagens produced by the parasites also spread.
- ◆ EVEN IF A TUMOR IS REMOVED OR REDUCED, WE HAVE TO ELIMINATE TOXICS, MUTAGENS AND PATHOGENICS OTHERWISE OUR WRONG BIOCHEMESTRY WILL GO ON.
- ◆ Removing the tumor does not solve anything, it only helps for a while. The disease is systemic: the tumors start to grow again.
- ◆ The rest of the body is what supplies the tumor with heavy metals, asbestos, bacteria, fungus,...

ELIMINATE ONCOGENES:

- ◆ They are virus and cause tumors
- ◆ People without cancer are also carriers
- ◆ They come in food and parasites
- ◆ They attach to chromosomes
- ◆ They multiply when our DNA multiplies
- ◆ When the virus produces a mutation (by azo dyes, APh's, radioactivity) in a gene, it is called oncogen.
- ◆ They need a detonator to activate themselves.

Once they are in the chromosomes they can **only** be killed by:

- ◆ **Ozonized oil and boswelvia.**

The full spectrum light kills them from the food applied

20' (wet food) or 30' (dry food) or zapping the food.

RECHARGE ACID FROM THE STOMACH

- ◆ All cancer patients (and most healthy adults) have an hydrochloric acid deficit (HCL) and pepsin in the stomach.
- ◆ Also a acetylcholine deficit that stops stimulating the production of these in the stomach. Because fo the cobalt and the 1-10 phenantroline produced by ascaris.
- ◆ This acid deficit causes parasites, bacteria, virus and fungus to go from the stomach to other tissues.
- ◆ In only 5' the pathogenics go from the stomach to other organs (take HCL in the beegening of lunch)
- ◆ HCL and pepsine can be taken.
- ◆ To help the stomach to make it take: ferrous gluconate, magnesium and vit. B2 5' before meals.

ELIMINATE COBALT

- ◆ Take 6 fresh apricot seeds as a source of laetrile (vit. B17) 3 days on, 3 days off.
- ◆ They can also be taken as suppository smashing them beforehand.
- ◆ The CO poisons the body and ATP is not produced = cachexia
- ◆ It frees itself from sorghum (fungus) coming from dead parasites.
- ◆ Take pau d'arco and equinacea as fungicide in addition to zapping.

APRICOT SEEDS SUPPOSITORY (DRY FRUIT!)



- ◆ 6 Fresh apricot seeds. Break the shell and extract the interior.
- ◆ 3 in suppository form(made by smashing the interior of the seed making the suppository shape with butter and freezing it (so it hardens and keeps the shape) and 3 via oral. Take and apply it 3 days on, 3 days off.
- ◆ THIS ELIMINATES THE ALKYLATING AGENTS AND THE CONNEXION TO YOUR DNA COMES FROM BUSKI

USE FULL SPECTRUM LIGHT

- ◆ Putting the patient in front of it the thiourea and pyruvic aldehyde production alternates normally.
- ◆ Kills bacteria, virus and parasite eggs from the food.
- ◆ Destroys the AZO dye of the food and products.
- ◆ Eliminates the ferritin of the white blood cells of an organ putting it for 10' near the organ (less than 5cm without clothes).



Use the food zappicator as an alternative to the full spectrum lights.

SUMMARY OF CANCER FORMATION

1. F.buski larvae and other parasites release malonic acid, interferes with cellular breathing and ATP production.
2. Clostridium produces DNA, isopropyl alcohol and toxic amines when there are parasites.
3. the amines accelerate cell division (more thiourea less pyruvic aldehyde)
4. More thiourea consumes thyroxine and bacteria are not killed because the lysosomes do not work.
5. Toxins attracted to the cells by "morbitropism"
6. Heavy metals consume sulphur = less reductive capacity. Heavy metals cause mutations.

SUMMARY OF CANCER FORMATION

7. Oxidant capacity decreases because it lacks iron by 1-10 phenantroline and other eating parasites.
8. Lanthanides block phosphatidylserine that ask s for the external cell digestion. Pancreatin ans lipase do not digest.
9. PAH's and other are made by ascaris and F. Buski and absorbed by cells.
10. Other bacteria, virus and oncovirus worsen the situation.
11. There are mutations.
12. AZO dyes cannot be excreted and generate more mutations.

SUMMARY OF CANCER FORMATION

- 13. So much mutation will disable the oxidant and reductive capacities.
- 14. Good germanium disappears.
- 15. Bcl -2 and deregulated bax = mutations p53.
- 16. Tumor grows.
- 17. If F. buski. Gets to the tumor and there is isopropyl alcohol (clostridium) = OPT production (orthophosphotyroxine) = tumor es malignant.

TASKS IN A CANCER

- 🟢 ELIMINATE CLOSTRIDIUM BACTERIA
- 🟢 ELIMINATE ASCARIS, F. BUSKI AND REST OF PARASITES
- 🟢 ELIMINATE METALS, FUNGUS AND REMAINING CARCINOGENICS.

FUNGUS

Almost all food have spores.

- ◆ They grow where a parasite dies. If WBC are well there is no problem.

In cancer – a great deal of tumors are full of fungus.

When parasites die, these appear:

- ◆ Baker's yeast that attracts RAS (oncovirus)
- ◆ Sorghum (causes bleeding in the mycotoxins)

Baker's yeast: all bread – have RAS (oncovirus) and get in the chromosomes. They can be killed with boswellia (3 doses), but there is easy reinfection. The ideal is:

- breads 30' full spectrum light or food zapicator
- Yeast full spectrum light or food zapicator

To eliminate mushrooms: Lugol, pau d'arco, eucalyptus.

FUNGUS

If there are too many mycotoxins the liver is poisoned and bilirubin rises

- ◆ Kill fungus → heavy metals rise
- ◆ Eliminate micotoxins from the liver (with glutathione)
- ◆ Quelate cobalt (from the first 2 mushrooms) with: IP6, MSM, VIT. C, THIOCTIC ACID, APRICOT SEEDS.

copper, vanadium and germanium.

MORE ABOUT CLOSTRIDIUM

- ◆ Anaerobic (little oxygen)
- ◆ Tends to be only in the colon of practically all adults
- ◆ Cancer patients, also in the small intestine, stomach or cancer organ
- ◆ In advanced cancer patients, in practically all organism
- ◆ Always returns to the ocolon even if eliminated
- ◆ Dental origin: fillings, endodontics, sleeves
- ◆ Creates muscle hardness and discomfort
- ◆ Block acetylcholine if they are in nerves or brain
- ◆ Cause crying and sadness if they are in the hypothalamus

ELIMINATE CLOSTRIDIUM

- 💧 Deworming (they are carriers)
- 💧 Dental work (tends to be found in the interior of endodontics).
- 💧 Dental hygiene with oregano dental powder
- 💧 It is not eliminated with probiotics, antibiotics or change in diet
- 💧 The only thing that is effective(together): betaine HCL, oregano oil without diluting and HCL 5% (15 drops x3)
- 💧 20 drops penetrates where is difficult for the immune system or the oxygen to do: in tumors, brain, bone marrow, ...

CAUSES OF DEATH IN A CANCER

- ◆ In 50% of cancer patients there is a lowering in the red blood cells and hemoglobin (despite transfusions).

Cause of death: heart failure.

- ◆ 25% tumor presses vital organ: arteries, brain, bile ducts,...

Cause of death: cancer

- ◆ 20% high levels of urea nitrogen. The kidneys do not eliminate urea nor creatine.

Cause of death: ammonia poisons the organism.

- ◆ 10% Hypercalcaemia

CAUSES OF DEATH IN A CANCER

Cause of death: kidney failure

- ◆ 10% Hyperproteinemia (high albumin) and high globulin. Above 16 is fatal.
- ◆ 10% Hypoproteinemia (low albumin). Edema is formed, blood pressures lowers, heart damage.
- ◆ 10% Hyponatremia: sodium and chloride lower. Heart failure.

CAUSES OF DEATH IN A CANCER

- ◆ 10% Liver failure. Coma.
- ◆ 5 % bilirubin rises. Above 30 and the organism is poisoned and produces coma.
- ◆ 5% Pneumonia. Asphyxiation.
- ◆ 1% hypothrombocythemia. Platelets deficit. Bleedings, hypotension, heart failure.

STERILIZING FOOD

- ◆ **VEGETABLES:** Iugol or HCL 5%. Boiling at 100° does not disinfect. This is why in hospitals the material is sterilized in autoclave at 121°. Pressure cooker is better. Microwave even better. They have parasite eggs and sometimes adults, boil for 10', cool for 10' to break the eggs and boil for 5'. Use pure salt (without toxic) to lower boiling point.
- ◆ **DAIRY:** HCL 5%
Cup of milk 2 drops
1 yogurt 4 drops
Cancer patients do not take dairy, they also have dyes and benzene that cause mutation ---- use vit. B2 and full spectrum light or food zappicator.

STERILIZING FOOD

- ◆ **MEAT, FISH:** even if baked at 200° the interior does not reach 90°. The best: microwave 600W and HCL (kills all parasite eggs). Child stomach (ph2) up to 1000 times more HCL than adults (ph5).
- ◆ **EGGS:** can have parasites inside or outside. Rinse with water with HCL or lugol and eat with HCL.
- ◆ **FOR FRUITS** (not melon nor watermelon), including banana and avocado:
Soak in hot water with HCL 2 times 1 min. (to detoxify) dry and then skin. Add B2 and HCL for parasites, dyes, pesticides and asbestos when eating.
Canned are not safe because they tend not to be sterilized beforehand.
Cherries and berries: have benzene and mold. Immerse in water with 2 drops of HCL per cup, put in front of the full spectrum light for micotoxins or zappicate. Add B2 and HCL to the food.

STERILIZING FOOD

- ◆ **LEGUME:** Wash it first with 2 drops of CHL. They might have E. coli and shigellas in the interior that survived cooking. Cool for 15' and cook again.
20' under full spectrum light replaces the second cooking and also kills oncogenic virus and destroys micotoxins.
They tend to have mold, dyes and benzene. Eat with HCL and B2.
To finish add 2 drops of HCL per serving.
- ◆ **DRY FRUIT:** Only with the shell. Eliminate brown skin. They have asbestos, benzene and mold.
- ◆ **BREAD:** has dyes, benzene and mold. Add HCL and B2 to the food. Put in front of full spectrum light or zap it.

STERILIZING FOOD

- ◆ **PASTA:** has mold. Eat it with HCL. Expose to full spectrum light or zappicate.
- ◆ **FLAX SEEDS:** have benzene and mold. Immerse in water with 2 drops of HCL.
- ◆ **OLIVE OIL:** has benzene, dyes and parasite eggs. Eat with HCL and vit. B2.
- ◆ **SPICES, SALT:** have dyes, benzene and mold. Eat with HCL and B2.
- ◆ **PACKAGED CEREALS:** rinse 3 times with hot water to eliminate asbestos. Cook twice. They have asbestos, dyes, benzene and mold. Add HCL and B2 to the food. Put in front of full spectrum lights or zappicate.
- ◆ **INFUSIONS:** have dyes, and mold. Have it with HCL and B2 and put in front of full spectrum lights or zappicare.

STERILIZING FOOD WITH OZONE

HOW TO USE

Put the food in a plastic bag. Insert ozonizer hose and close the bag. The bag should be open to allow the ozone to get in. After the ozonizer is turned off the packages and bag should be closed once again. The ozonization continues for approximately 10 minutes, even in refrigeration. The flavour of the ozone can be eliminated later by heating the food.

TIME OF OZONIZATION:

- ◆ General sterilization: 7 minutes
- ◆ Dyes and chlorine: 10-20 minutes
- ◆ Dairy products: 15 minutes



- Kills bacteria and viruses
- Disinfects
- Oxidizes toxics

DO NOT OZONIZE SUPPLEMENTS, MEDICINES NOR HERBS

DANGEROUS FOOD

- ◆ Sunflower seeds and wheat grains. Hard to eliminate the asbestos.
- ◆ Canned vegetables and fruits. Too many hard to eliminate toxics.
- ◆ Mushrooms: too much mycotoxins. Avoid.
- ◆ Sweets, sugar and fructose. Too much asbestos. Avoid.
- ◆ Comercial honey. Too much asbestos. Avoid.
- ◆ Grapes, strawberries. Too much mold. Avoid.
- ◆ Raisins (grape, plums, ...) asbestos, benzene, dys and mold cannot be eliminated.

TO COOK USE:

- 💧 Glass or enamel
- 💧 Stainless steel pot (without nickel)

TO FRY USE:

- 💧 Glass or metal pan. The worst is teflon or silverstone.

TO BAKE USE:

- 💧 Glass or enamel trays

Do not use spray for pans because they have silicone.

Cook with olive oil, coconut oil or butter that do not turn into acrylic acid.

EATING OUTSIDE THE HOME

- ◆ Sprinkle with vit. B12 and vit. C to eliminate benzene, dyes and acrylic acid.
- ◆ Add 15 drops of HCL (more than at home)
- ◆ 6 drops of lugol to the glass of water at the end of the meal
- ◆ Ask to microwave the food for 3 more minutes (salad as well)

KOSHER FOOD IS THE EXCEPTION THEY ARE SAFE

PAIN

- ◆ Caused by streptococcus (low immune system, presence of asbestos and lathanides) that come in dyes.
- ◆ Produce phenol that if not detoxified produces pain.

Kill carrier parasites (fasciolopsis, ascaris,...) with its corresponding protocol

- Colloidal silver(homemade) 1tablespoon 4 times a day
- HCL (10 drops in empty cap. With lunch)

PAIN

Kill estreptococcus with:

- cayenne pepper (3 to 6 cap., 3 times a day)
- ½ teaspoon of inositol (before meals with bread). Detox. phenol.
- 6 drops of salvia oil in an empty cap before lunch with some bread.
- 10 drops of chamomile oil in another empty cap. Before meals with some bread.
- zipper
- Ozonized water 5' (drink before 20") before meals.
- Manganese oxide (300mg with each meal. Phenol detox)
- 2 teaspoons of raw beet juice before meals with a teaspoon of vinegar. Phenol detox.

CANCER (continued)

PARASITES TO CONQUER IN A CANCER:

- ◆ Ascaris lumbricoides
- ◆ Ascaris megalocephalus
- ◆ Dirofilaria
- ◆ Fasciolopsis buskii
- ◆ Fasciola
- ◆ Human liver fluke (Clonorchis sinensis)
- ◆ Onchocerca
- ◆ Euritrema pancreático
- ◆ Strongyloides

Continued...

CANCER (continued)

VIRUS TO CONQUER IN A CANCER:

- ◆ **Paperaas**
- ◆ MYC
- ◆ RAS
- ◆ JUN
- ◆ FOS
- ◆ SV40
- ◆ NEO
- ◆ SRC
- ◆ Epstein Barr (EBV)
- ◆ Cytomegalovirus
- ◆ Hep. B
- ◆ Adenovirus
- ◆ Influenza A and B

Continued...

CANCER (continued)

BACTERIAS TO CONQUER IN A CANCER:

- ◆ Clostridium (varieties)
- ◆ Salmonellas (varieties)
- ◆ Staphylococcus aureus
- ◆ Streptococcus G and Streptococcus pneumoniae
- ◆ E. Coli
- ◆ Mycobacterium
- ◆ Bacillus cereus
- ◆ Mycoplasma pneumoniae
- ◆ Pseudomonas aeruginosa

Continued...

CANCER (continued)

OTHER PATHOGENICS TO CONQUER IN A CANCER:

- ◆ Yeast
- ◆ Prions

FOOD AND CANCER:

- ◆ Avoid all kinds of food of the “lily family” for it is the favourite food of fasciolopsis buski and if you eat, it must have been cooked for 10 minutes. Other method is not valid.
- ◆ Among these foods we can find: aloe vera, asparagus, beans (legume, even cooked), coriander, chickpeas (sometimes), garlic, chewing gum, lentils (even cooked), chips, linseed oil, margarines, canola oil, corn oil, peanut oil, black olives, onions, peanut butter, soya drinks, bread (most), butter.
- ◆ Most cereals provide the body with a south polarization.
- ◆ Avoid phloridizin, chlorogenic acid and gallic acid sources (they are the genesis of the tumors)

Continued...

CANCER (continued)

THE CANCER GENERATORS ARE:

◆ Phloridzin:

- Pork and products
- Soya and products
- Any not very ripe fruit
- Bananas (freezing it destroys the allergen)
- Amaranth and raw millet
- Raw cashew
- Cauliflower, cabbage, courgette (raw)
- Milk and products
- Jalapeño
- Mango
- Oils
- Fried potatoes
- Quassia herb (if not tested)
- Apples (except Red Delicious and Golden Delicious)

Continued...

CANCER (continued)

- ◆ Chlorogenic acid:
 - Potatoes (cooking for a long time destroys the allergen)
 - Cow's milk and products (boiling for 1 minute destroys the allergen)
 - Pimentos (except when very cooked)
 - Unripe fruits
 - Watermelon
 - Breads and products with yeast
- Cereals (cooking for a long time kills the allergen): Avoid cold cereals
- All kinds of oil
- Cherry
- Jalapeño
- Mango
- Pepper
- Quassia herb
- Dry salvia
- Soya and products

Continued...

CANCER (continued)

💧 Gallic acid:

- Breads and products with yeast
- Cereals (cooking for a long time destroys the allergen). Avoid all kinds of cold cereals.
- All kinds of oils treated with antioxidants to prevent rancidity.
- Chicken fed with feedstock and its eggs
- Cow's milk and dairy.
- Maple syrups.

Continued...

CANCER (continued)

AVOID ALLERGEN RESPONSIBLE FOR EACH CANCER:

- ◆ **Abdominal and lymph nodes:** Lactose and prawns
- ◆ **Adrenal glands:** Almonds
- ◆ **Aorta:** Menadione (Raw vegetables and most cereals)
- ◆ **B-cells:** Corn
- ◆ **Bile ducts:** Vinegar (acetic acid)
- ◆ **Bone:** PIT (cauliflower, radish, mustard, pea, yogurt, broccoli, brussels sprouts, cabbage) and umbelliferone (raw onion, carrot)
- ◆ **Bladder:** Cinnamic acid (chewing gum, lime, vanilla, yogurt, cinnamon)

Continued...

CANCER (continued)

- ◆ **Bone marrow:** Citrus
- ◆ **Brain and spinal chord:** Caffeic acid (grape juice, lime, oranges, strawberry, tea, yogurt, broccoli)
- ◆ **Breast:** Apicol (cheese, chewing gum, lecithin, soya, fried potatoes, margarine, canola, corn, cotton, olive (except pure), sesame, soya oils, black olives, sardines in oil, tuna, yogurt, bread, butter)
- ◆ **Cartilage:** Wheat
- ◆ **Cervix:** Aspirin
- ◆ **Ear:** Malvin (red grapes, chewing gum, mango, strawberries, tomatoes, yogurts)

Continued...

CANCER (continued)

- ◆ **Colon:** Acetic acid (vinegar)
- ◆ **Esophagus:** Menadione (wheat flour, red grapes, pre-cooked rice, oat, cabbage, dairy) acetic acid (vinegar), caffeic acid (coffee, caffeine, alcoholic beverages).
- ◆ **Eye:** Lillicaea
- ◆ **Gallbladder:** Acetic acid (vinegar)
- ◆ **Heart:** Tryptophan
- ◆ **Hodkin lymphoma:** Lactose, prawns
- ◆ **Stomach:** Phenol (benzene derived).
- ◆ **Hypothalamus:** Chlorogec acid

Continued...

CANCER (continued)

- ◆ **Head of the pancreas:** Quercetin (dairy, pumpkim, courgette, kiwi, cucumber)
- ◆ **Tail of the pancreas:** Phloridzin
- ◆ **Kidney:** Albumin, casein
- ◆ **Liver:** Umbelliferone
- ◆ **Lungs:** Coumarin (honey, rice, vanilla)
- ◆ **Melanoma:** Phenylalanine + mercury
- ◆ **Nervs:** Apple (no phloridzin), caffeic acid, apiol
- ◆ **Marrow:** Gallic acid, caffeic acid, apiol, 'lily family'
- ◆ **Non-Hodgkin lymphoma:** Prawns, corn and lactose

Continued...

CANCER (continued)

- 💧 **Ovary:** Phenylalanine, apiol
- 💧 **Pineal:** Gallic acid
- 💧 **Pituitary:** Phloridzin
- 💧 **Platelets:** Citrics
- 💧 **Prostate:** Acetic acid (vinegar) and naringenin (oranges)
- 💧 **Red blood cells:** Fructose
- 💧 **Salivary glands:** Casein
- 💧 **Muscle:** Melon, lemon
- 💧 **Skin:** Acetaldehyde (almond, hazelnut, nut, raw onion), apiol

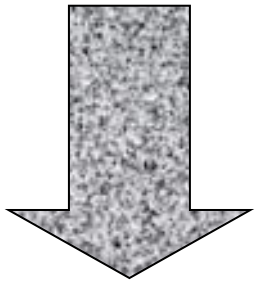
Continued...

CANCER (continued)

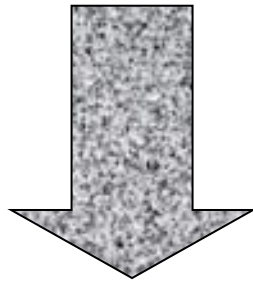
- ◆ **Spleen:** Peanuts
- ◆ **Thymus:** Naringenin (Oranges)
- ◆ **Thyroid:** Tyramine (banana, dairy, peanuts)
- ◆ **Tongue:** MSG (monossodium glutamate), naringenin (oranges)
- ◆ **Trachea:** Phloridzin
- ◆ **Ureter:** Beet, avocado
- ◆ **Uterus:** Phenylalanine
- ◆ **Vagina:** Acetaldehyde, Aspirin
- ◆ **Veins:** Menadione
- ◆ **Venous valves:** Corn

Continued...

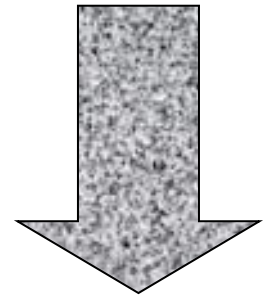
WORK TO BE DONE IN CANCER



**Herbs AND
Supplements**



**Zapper and
Zapping plates**



Homeographies

BOOSTING IMMUNE SYSTEM

- 💧 The WBC (White Blood Cells) must be fed for it to work properly.
- 💧 They need 3 foods:
 - Organic germanium (hydrangea)
 - Organic selenium
 - Organic vitamin C (rose hip)

CANCER (Supplementation)

SUPPORT SUPPLEMENTS TO WHITE BLOOD CELLS:

Selenium (Clark): 3 capsules 5 times a day.

Food for proper functioning of WBC.

Hydrangea (Clark): 2 capsules 5 times a day.

Contributes with germanium for proper functioning of WBC.

Rose hip (Clark): 2 capsules 5 times a day.

Selenium and germanium antioxidant and reinforcement.

IP6 (Clark): 20 drops 2 times a day in a glass of water.

Takes radioactivity away from the organism and strengthens WBC.

Oregano oil (Clark) (put in an homeography jar before using it): 10 drops 1 time a day inside a capsule (with food)

Bactericidal and WBC strengthener.

Ginger (Clark): 2 capsules 3 times a day for 5 days.

Depurative of kidney and WBC stimulant.

Uva Ursi (Clark): 2 capsules 3 times a day for 5 days.

Depurative of kidney and WBC stimulant.

Vitamin D₃ (Clark): 2 capsules 5 times a day for 5 days.

Helps to soften the hard parts of the tumor for the white blood cells to get in.

Continued...

CANCER (Supplementation)

OTHER PROTECTIVE SUPPLEMENTS:

Lugol's Iodine (Clark) (Only if not allergic): 6 drops in $\frac{1}{3}$ of a glass of water 4 times a day.
Especially to eliminate salmonella and shigella.

Oscillococcinum: 1 tube before going to bed, under the tongue.
Prevent cold and flu.

MSM (Clark): 2 capsules 5 times a day.
Detoxificant and breaks the cancer forming chain.

Ozonized distilled water 5': 1 cup 3 times a day.
Pathogen elimination, especially anaerobic bacteria.

Bicarbonate: $\frac{1}{4}$ of teaspoon in $\frac{1}{2}$ a cup of water when waking up and going to bed.
pH regulator

Betaine hydrochloride (Clark): 3 capsules 3 times a day (with meals) for 3 days when starting dental work.
Stimulates the hematopoietic system reactivating the red blood cell, white blood cells and platelets production.

Continued...

CANCER (continued)

PROTECTIVE HERBS AND INFUSIONS:

Eucalyptus (Clark): 1 capsule 3 times a day.
Helps the detoxification, necessary to kill pathogens.

Birch bark tea (Clark): 1 cup 2 times a day.
Helps the detoxification, necessary to kill parasites.

Turmeric (Clark): 6 capsules 3 times a day.
Bactericidal and anti-inflammatory.

Fennel (Clark): 6 capsules 3 times a day.
Bactericidal.

OTHER SUPPLEMENTS:

Deworming program (Clark). **FUNDAMENTAL**

Ascaris deworming (Clark). **FUNDAMENTAL**

Continued...

CANCER (continued)

5 MINUTES BEFORE THE 3 MEALS:

Vitamin B₂ (Clark): 2 capsules.

Improve circulation and production of red blood cells.

Magnesium (Clark): 1 capsule.

We need greater intake during these processes because there is usually a deficit.

Citric acid (Clark): 1 capsule.

Helps with toxin elimination.

Vitamin B₆ (Clark): 1 capsule of 250mg.

Helps the production of red blood cells.

WITH THE 3 MEALS:

HCl (Clark): 15 drops mixed with the food.

Helps digestion and prevent the proliferation of pathogens.

Potassium (Clark): 1 capsule.

We need greater intake during these processes because there is usually a deficit.

Continued...

CANCER (continued)

AFTER THE 3 MEALS:

Pepsin (Clark): 1 capsule.

Digestive and eliminates prions

Digestive enzymes (Clark): 1 capsule.

Digestive.

Pancreatin-Lipase (Clark): 1 capsule.

Digestive.

BETWEEN MEALS:

Pancreatin-Lipase (Clark) (only when testing gets OPT negative): 15 capsules 2 times a day.

Dissolves Tricalcium phosphate.

Vitamin A (Clark): 1 capsule 3 times a day.

Helps to soften the hard parts of the tumor for the white blood cells to get in.

BED TIME:

Ornithine (Clark): 9 capsules.

Improve sleeping by helping to eliminate ammonia.

Continued...

HOMEOPATHIC SUPPLEMENTATION IN CANCER

HOMEOPATHIC DROPS

CANCER (continued)

HOMEOPATHIES TO CLEAN KIDNEYS AND LYMPH SYSTEM

Pyruvic Aldehyde Set (also a white blood cells strengthener)	Drops × Times a day							
	Week 1							Weeks 2 to 4
	1° day	2° day	3° day	4° day	5° day	6° day	7° day	Each day
Hematoxylin	6 × 6	6 × 6	6 × 3	6 × 3	6 × 3	6 × 3	6 × 3	6 × 3
Right and left hypothalamus	6 × 6	6 × 6	6 × 3	6 × 3	6 × 3	6 × 3	6 × 3	6 × 3
Iodine	6 × 6	6 × 6	6 × 3	6 × 3	6 × 3	6 × 3	6 × 3	6 × 3
Hetylglyoxal	6 × 6	6 × 6	6 × 3	6 × 3	6 × 3	6 × 3	6 × 3	6 × 3
Rhodanese	6 × 6	6 × 6	6 × 3	6 × 3	6 × 3	6 × 3	6 × 3	6 × 3
Ir 4	6 × 6	6 × 6	6 × 3	6 × 3	6 × 3	6 × 3	6 × 3	6 × 3

Continued...

Quinones Drop Set (Preventive of plasmodium that get in the red blood cells and destroy it)	Drops × Times a day							
	Week 1							Weeks 2 to 4
	1° day	2° day	3° day	4° day	5° day	6° day	7° day	Each day
No plaquinil	6 × 6	6 × 6	6 × 3	6 × 3	6 × 3	6 × 3	6 × 3	6 × 3
Benzoquinona	6 × 6	6 × 6	6 × 3	6 × 3	6 × 3	6 × 3	6 × 3	6 × 3
No quinidine	6 × 6	6 × 6	6 × 3	6 × 3	6 × 3	6 × 3	6 × 3	6 × 3

CANCER (continued)

Kidneys set and lymph system Week 1	Drops × Times a Day						
	1° day	2° day	3° day	4° day	5° day	6° day	7° day
1° KDR minute rest	6 × 6	6 × 6	6 × 3	6 × 3	6 × 3	6 × 3	6 × 3
2° KDL minute rest	6 × 6	6 × 6	6 × 3	6 × 3	6 × 3	6 × 3	6 × 3
3° KDR/WBC minute rest	6 × 6	6 × 6	6 × 3	6 × 3	6 × 3	6 × 3	6 × 3
4° KDL/WBC minute rest	6 × 6	6 × 6	6 × 3	6 × 3	6 × 3	6 × 3	6 × 3
5° KDR + SET L minute rest	6 × 6	6 × 6	6 × 3	6 × 3	6 × 3	6 × 3	6 × 3
6° KDL + SET L minute rest	6 × 6	6 × 6	6 × 3	6 × 3	6 × 3	6 × 3	6 × 3
7° KDR + HM (take out) minute rest	6 × 6	6 × 6	6 × 3	6 × 3			
8° KDL + HM (take out) minute rest	6 × 6	6 × 6	6 × 3	6 × 3			
9° KDR + SET L + HM (take out) minute rest	6 × 6	6 × 6	6 × 3	6 × 3			
10° KDL + SET L + HM (take out) minute rest	6 × 6	6 × 6	6 × 3	6 × 3			
11° KDR + WBC + HM (take out) minute rest	6 × 6	6 × 6	6 × 3	6 × 3			Continued...
12° KDL + WBC + HM (take out) minute rest	6 × 6	6 × 6	6 × 3	6 × 3			

CANCER (continued)

Kidneys set and lymph system Week 2	Drops × Times a day						
	1 ^o day	2 ^o day	3 ^o day	4 ^o day	5 ^o day	6 ^o day	7 ^o day
1^o KDR minute rest	6 × 3	6 × 3	6 × 3	6 × 3	6 × 3	6 × 3	6 × 3
2^o KDL minute rest	6 × 3	6 × 3	6 × 3	6 × 3	6 × 3	6 × 3	6 × 3
3^o KDR/WBC minute rest	6 × 3	6 × 3	6 × 3	6 × 3	6 × 3	6 × 3	6 × 3
4^o KDL/WBC minute rest	6 × 3	6 × 3	6 × 3	6 × 3	6 × 3	6 × 3	6 × 3
5^o KDR + SET L minute rest	6 × 3	6 × 3	6 × 3	6 × 3	6 × 3	6 × 3	6 × 3
6^o KDL + SET L minute rest	6 × 3	6 × 3	6 × 3	6 × 3	6 × 3	6 × 3	6 × 3
7^o KDR + Dyes (take out) minute rest	6 × 6	6 × 6	6 × 3	6 × 3			
8^o KDL + Dyes (take out) minute rest	6 × 6	6 × 6	6 × 3	6 × 3			
9^o KDR + SET L + Dyes (take out) minute rest	6 × 6	6 × 6	6 × 3	6 × 3			
10^o KDL + SET L + Dyes (take out) minute rest	6 × 6	6 × 6	6 × 3	6 × 3			
11^o KDR + WBC + Dyes (take out) minute rest	6 × 6	6 × 6	6 × 3	6 × 3			Continued...
12^o KDL + WBC + Dyes (take out) minute rest	6 × 6	6 × 6	6 × 3	6 × 3			

CANCER (continued)

Kidneys set and lymph system Week 3 (continued)	Drops × Times a day						
	1 ^o day	2 ^o day	3 ^o day	4 ^o day	5 ^o day	6 ^o day	7 ^o day
1^o KDR minute rest	6 × 3	6 × 3	6 × 3	6 × 3	6 × 3	6 × 3	6 × 3
2^o KDL minute rest	6 × 3	6 × 3	6 × 3	6 × 3	6 × 3	6 × 3	6 × 3
3^o KDR/WBC minute rest	6 × 3	6 × 3	6 × 3	6 × 3	6 × 3	6 × 3	6 × 3
4^o KDL/WBC minute rest	6 × 3	6 × 3	6 × 3	6 × 3	6 × 3	6 × 3	6 × 3
5^o KDR + SET L minute rest	6 × 3	6 × 3	6 × 3	6 × 3	6 × 3	6 × 3	6 × 3
6^o KDL + SET L minute rest	6 × 3	6 × 3	6 × 3	6 × 3	6 × 3	6 × 3	6 × 3
7^o KDR + WBGR (take out) minute rest	6 × 6	6 × 6	6 × 3	6 × 3			
8^o KDR + Plastic and rubber (take out) minute rest	6 × 6	6 × 6	6 × 3	6 × 3			
9^o KDL + WBGR (take out) minute rest	6 × 6	6 × 6	6 × 3	6 × 3			
10^o KDL + Plastic and rubber (take out) minute rest	6 × 6	6 × 6	6 × 3	6 × 3			
11^o KDR + SET L + WBGR (take out) minute rest	6 × 6	6 × 6	6 × 3	6 × 3			Continued...
12^o KDR + SET L + Plastic and rubber (take out) minute rest	6 × 6	6 × 6	6 × 3	6 × 3			

CANCER (continued)

Kidneys set and lymph system Week 3 (continued)	Drops × Times a day						
	1 ^o day	2 ^o day	3 ^o day	4 ^o day	5 ^o day	6 ^o day	7 ^o day
13^o KDL + SET L + WBGR (take out) minute rest	6 × 6	6 × 6	6 × 3	6 × 3			
14^o KDL + SET L + Plastic and rubber (take out) minute rest	6 × 6	6 × 6	6 × 3	6 × 3			
15^o KDR + WBC + WBGR (take out) minute rest	6 × 6	6 × 6	6 × 3	6 × 3			
16^o KDR + WBC + Plastic and rubber (take out) minute rest	6 × 6	6 × 6	6 × 3	6 × 3			
17^o KDL + WBC + WBGR (take out) minute rest	6 × 6	6 × 6	6 × 3	6 × 3			
18^o KDL + WBC + Plastic and rubber (take out) minute rest	6 × 6	6 × 6	6 × 3	6 × 3			

Continued...

CANCER (continued)

Kidneys set and lymph system Week 4 (continued)	Drops × Times a day						
	1º day	2º day	3º day	4º day	5º day	6º day	7º day
1º KDR minute rest	6 × 3	6 × 3	6 × 3	6 × 3	6 × 3	6 × 3	6 × 3
2º KDL minute rest	6 × 3	6 × 3	6 × 3	6 × 3	6 × 3	6 × 3	6 × 3
3º KDR/WBC minute rest	6 × 3	6 × 3	6 × 3	6 × 3	6 × 3	6 × 3	6 × 3
4º KDL/WBC minute rest	6 × 3	6 × 3	6 × 3	6 × 3	6 × 3	6 × 3	6 × 3
5º KDR + SET L minute rest	6 × 3	6 × 3	6 × 3	6 × 3	6 × 3	6 × 3	6 × 3
6º KDL + SET L minute rest	6 × 3	6 × 3	6 × 3	6 × 3	6 × 3	6 × 3	6 × 3
7º SET L (take out) minute rest	6 × 6	6 × 6	6 × 3	6 × 3			
8º SET L + HM (take out) minute rest	6 × 6	6 × 6	6 × 3	6 × 3			
9º SET L + Azo Dyes (take out) minute rest	6 × 6	6 × 6	6 × 3	6 × 3			
10º SET L + WBGR (take out) minute rest	6 × 6	6 × 6	6 × 3	6 × 3			
11º SET L + Plastic and rubber (take out) minute rest	6 × 6	6 × 6	6 × 3	6 × 3			Continued...
12º SET L + WBC + HM (take out) minute rest	6 × 6	6 × 6	6 × 3	6 × 3			

CANCER (continued)

Kidneys set and lymph system Week 4 (continued)	Drops × times a day						
	1 ^o day	2 ^o day	3 ^o day	4 ^o day	5 ^o day	6 ^o day	7 ^o day
13^o SET L + WBC + Azo Dyes (take out) minute rest	6 × 6	6 × 6	6 × 3	6 × 3			
14^o SET L + WBC + WBGR (take out) minute rest	6 × 6	6 × 6	6 × 3	6 × 3			
15^o SET L + WBC + Plastic & rubber (take out) minute rest	6 × 6	6 × 6	6 × 3	6 × 3			

- Also perform in the liver all the detoxification performed in the kidneys. That is to say, all the drops for KDR or KDL to the liver.

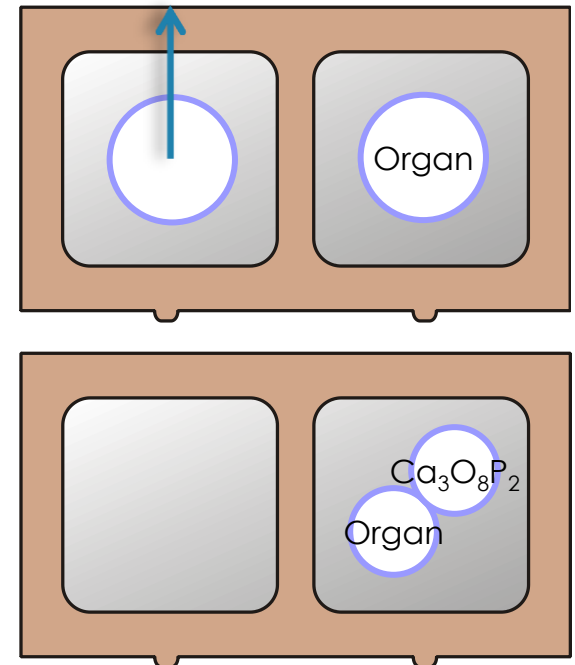
Continued...

ZAPPER AND ZAPPING PLATES

IMPORTANT ZAPPER:

- Starts 7-10 days after beginning the supplementation
- Regular Zapper of 60 minutes
- Zapping plates:
 - **1°** Vascular set – affected organ afectado (20' each)
 - **2°** Vascular set (blood, WBC, venis, arteries, capillary, lymph, L group) 20' each
 - **3°** Right kidney (20')
 - **4°** Left kidney (20')
 - (eye: never put several organs at a time)
- After 15 days of Zapping add:
 - Affected organ – tricalcium phosphate (to dissolve the cover that usually wraps the tumors)

Each component of the vascular set (20')



Continued...

ZAPPING PLATES

- ◆ The organ with the tumor is zapped in many ways with this method: combined with arteries, veins, white blood cells (WBC) in order to get to all parts of the sick organ.
 - Each treatment lasts 20 minutes.
 - This sequence of zapping is followed by another one to clean blood, lymph nodes and the WBC.
 - The kidneys are zapped repeatedly to avoid obstruction with fat and heavy metals.
 - The 20 minutes zapping can be continued for 8 hours or more.



ZAPPICATE AN ORGAN

WHEN TAKING DROPS FOR IT AT THE SAME TIME

HAS AN EXCEPTIONAL AND POWERFUL EFFECT

CANCER (continued)

SYMPTOMS OF DETOXIFICATION WHEN YOU START DEWORMING:

- ◆ Dizziness, fatigue and general discomfort: Birch tea
- ◆ Flu symptoms:
 - Oscilococcimun: 1 one-dose at night
 - Eucalyptus: 1 capsule 3 times a day
- ◆ Diarrhea and digestive disorders:
 - Lugol (Clark) if you are not allergic: 6 drops 6 times a day in water

Continued...

CANCER (continued)

GENERALITIES IN CANCER:

- ◆ Essential to drink and cook with water from the distiller.
- ◆ Instal anti-polonium filters in the general water inlet for personal hygiene.
- ◆ Put tooth brush and all plastic containers in water about to boil to close porosity
- ◆ Use only supplements (Clark) with no traces of any immunosuppressants (heavy metals, asbestos, PCB,S, benzene, azo dyes and cholrine)
- ◆ Do not use any kind of metal in contact with the skin (bracelets, rings, etc...)

Continued...

CANCER (continued)

- ◆ Any supplement in the form of capsule or pill, freeze it (in the package) for 24 hours before start using it
- ◆ Do not use metallic cutlery to eat and the plastic ones, harden them beforehand
- ◆ Use only stainless steel, glass and polyethylene 2 (like plastic)
- ◆ Zappicate plastic parts in the mouth and gums (1 part every 2 days) with the dental zappicator
- ◆ Zappicate all food for 10 minutes. Ideally just before ingesting.
- ◆ Ozonize the food for 10 minutes just before eating and keep it for 10 minutes in a closed bag to destroy allergens that facilitates tumor cells

Continued...

CANCER (continued)

MORE ABOUT CANCER:

- ◆ vitamin D3 together with vitamin A and IP6, are going to soften the hard parts of the tumor for the white blood cells to penetrate.
- ◆ Turmeric also kills the SV40 that usually digests the rest of the oncovirus present in a CA.
- ◆ The digestive enzymes: penetrate the tissue and go cleaning and digesting the cadavers of the pathogens
- ◆ Oregano oil: Kills clostridium. This bacteria produces an excess of DNA and other tumor growth factors like the Ras and Thiourea. Also produces HCG which protects the tumor from any "aggression".

Continued...

CANCER (continued)

- ◆ The CEA (carcinoembryonic antigen) is produced by mold(yeast)
- ◆ The heavy metals (and specially nickel) apart from lowering the immune system, change the polarization of the organs to south
- ◆ The hydrangea, because of its high content of germanium, protects against tumor cells mutation
- ◆ The zipper, apart from killing pathogens, polarizes the organism north and gives energy to the white blood cells
- ◆ Vitamin D3 and vitamin A lead tumor cells towards healing

Continued...

CANCER (continued)

- ◆ The low alkaline phosphatase is often produced by cobalt in the WBC (do an homeography)
- ◆ The high LDH is often produced by the sudan black dye in the red blood cells (do an homeography)
- ◆ The low LDH is often produced by cobalt in the red blood cells (do an homeography)

Continued...

CANCER AND DENTAL WORK

VERY IMPORTANT in the cancer is the dental work (to avoid immunosuppression caused by the heavy metals and eliminate polonium, which is the basis of all cancers):

- ◆ Elimination of metals and substitution by tested composite:
- ◆ Elimination of pieces with endodontics
- ◆ Dental hygiene with dental powder with oregano (Clark)
- ◆ Once all the dental work is done, rinse (to eliminate polonium from the gums). For 3 or 4 days perform it 3 times a day with 1 hour interval between each rinse:
 1. ¼ dental bleach (Clark) + ¾ of water when waking up (only once a day).
 2. Powder of 2 capsules of citric acid (Clark), dissolve and leave in mouth for 5 minutes.
 3. Powder of 1 capsule of EDTA (Clark) in some water, dissolve and leave in mouth for 5 minutes.
 4. 10 droplets of IP6 + 2 fingers of water. 5 minutes in mouth.

Continued...

ADDITIONAL INFORMATION

BOOK OF INTEREST

**For any questions about
Clark Therapy, contact
us in:**

info@clarktherapyon-line.com

